



Cir-Kit Replacement Parts

Description	Part Number
Setting Tool Assembly, Upper Setting Tool	6000-0051-P1
Setting Tool Guide	6000-0054-P1
Support Tool Base	1321-0054-P1
Edge Connector Clamp Assembly	6000-0130-P1
Kapton Tape, 12.7mm (0.5") x 76.2mm (3.0") 25 pieces	1289-0016-01-P25

Non-ThermoBond Cir-Kits Frames

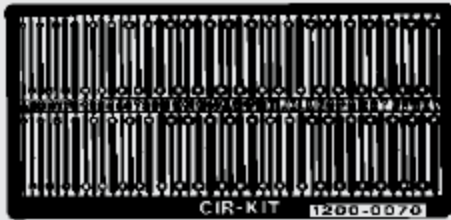


Straight Run Frame
1200-0074-P1

RUN TABULATION CHART		
RUN DESIGNATIONS	RUN WIDTH	# OF RUNS
A	0.015	9
B	0.02	6
C	0.025	6
D	0.031	6
E	0.041	6
F	0.051	6
G	0.062	6
H	0.075	4
J	0.093	3
K	0.1	4



Non-ThermoBond Cir-Kits Frames



Track Pad Frame, (Selector Type)

1200-0070-P1

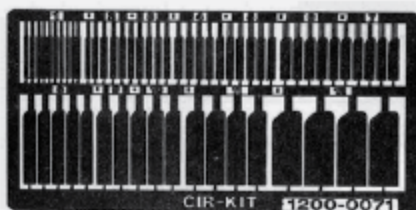
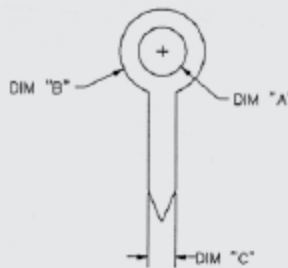
Track Pad Frame, choice of two of each letter option on the above frame

B, G, (letter size)

1200-0011_

An example would be 1200-0011B. This would be a frame containing pad B only.

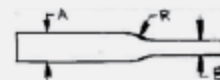
PAD DESIGNATION	"A"	"B"	"C"	PAD DESIGNATION	"A"	"B"	"C"
B	0.033	0.051	0.025	1	0.041	0.062	0.02
G	0.033	0.062	0.051	2	0.041	0.062	0.025
				3	0.041	0.062	0.031
				4	0.041	0.062	0.051
				5	0.041	0.075	0.02
				6	0.041	0.075	0.025
				7	0.041	0.075	0.031
				8	0.041	0.075	0.051
				9	0.041	0.075	0.062
				10	0.041	0.093	0.02
				11	0.041	0.093	0.025
				12	0.041	0.093	0.031
				13	0.041	0.093	0.051
				14	0.041	0.093	0.062
				15	0.041	0.1	0.025
				16	0.041	0.1	0.031
				17	0.041	0.1	0.051
				18	0.041	0.1	0.062



Edge Connector

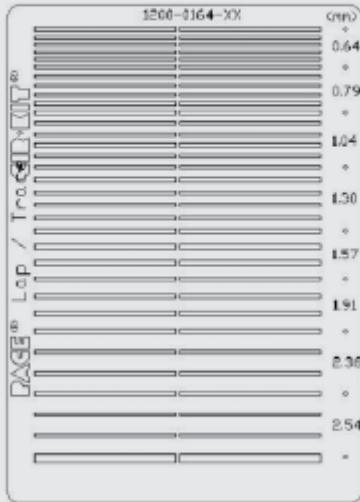
Frame 1200-0071-P1

CONNECTOR DESIGNATION	"A" WIDTH	"B" WIDTH	# OF CONNECTORS
1	0.031	0.02	10
2	0.051	0.025	5
3	0.051	0.031	5
4	0.062	0.031	5
5	0.062	0.041	5
6	0.08	0.041	5
7	0.08	0.041	5
8	0.1	0.051	5
9	0.125	0.051	2
10	0.125	0.062	3
11	0.156	0.062	4
12	0.25	0.093	4



*These Frames do not have a dry-film adhesive backing. NOTE: Dimensions are ± 0.003 "

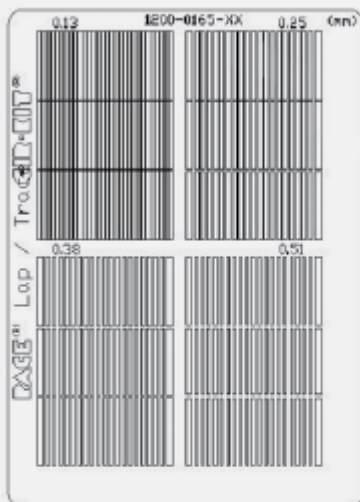
Non-ThermoBond Cir-Kits Frames



SEC.	# OF TRACES	TRACE WIDTH NOM. (mm)	TRACE WIDTH ± .001 (IN)
1	29	0.127	0.005
2	20	0.381	0.015
3	20	0.254	0.01
4	20	0.508	0.02

Lap / Trace (Straight)

1200-0164-03-P1



ROW	# OF TRACES	TRACE WIDTH NOM. (mm)	TRACE WIDTH ± .001 (IN)
1	5	0.64	0.025
2	5	0.79	0.031
3	5	1.04	0.041
4	5	1.3	0.051
5	3	1.57	0.062
6	3	1.91	0.075
7	3	2.36	0.093
8	3	2.54	0.1

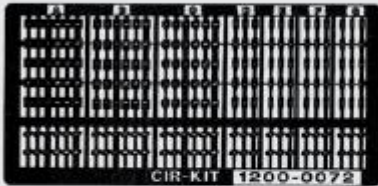
*These Frames do not have a dry-film adhesive backing.

Lap / Trace (Fine)

1200-0165-03-P1

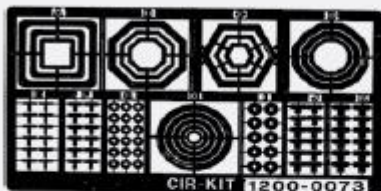
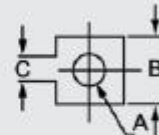


Non-ThermoBond Cir-Kits Frames



Dip Pad Frame
1200-0072-P1

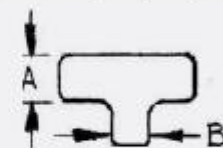
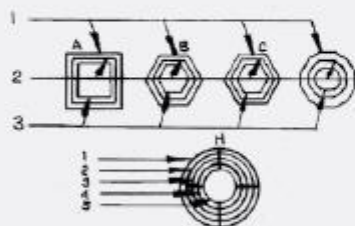
FRAME DESIGNATION	"A" WIDTH	"B" width		"b" WIDTH
		RECT. PADS	ROUND PADS	
		A1	0.031	
A2	0.031	0.08	0.07	0.025
A3	0.031	0.08	0.07	0.05
A4	0.041	0.08	0.07	0.02
A5	0.041	0.08	0.07	0.025
A6	0.041	0.08	0.07	0.05
B1	0.031	0.07	0.07	0.025
B2	0.031	0.07	0.07	0.031
B3	0.031	0.07	0.07	0.05
B4	0.041	0.07	0.07	0.025
B5	0.041	0.07	0.07	0.031
B6	0.041	0.07	0.07	0.05
C1	0.031	0.07	0.07	0.025
C2	0.031	0.07	0.07	0.031
C3	0.031	0.07	0.07	0.05
C4	0.041	0.07	0.07	0.025
C5	0.041	0.07	0.07	0.031
C6	0.041	0.07	0.07	0.05
D1	0.041	0.05	0.062	0.025
D2	0.031	0.05	0.062	0.031
D3	0.031	0.05	0.062	0.031
E1	0.031	0.05	0.062	0.025
E2	0.031	0.05	0.062	0.031
E3	0.031	0.05	0.062	0.031
F1	0.031	0.05	0.062	0.02
F2	0.031	0.05	0.062	0.031
F3	0.031	0.05	0.062	0.031
G1	0.031	0.041	0.062	0.025
G2	0.031	0.041	0.062	0.031
G3	0.031	0.041	0.062	0.031



Dip Pad Frame
1200-0073-P1

FRAME DESIGNATION	Track Width				
	1	2	3	4	5
A	0.062	0.051	0.031		
B	0.062	0.051	0.031		
C	0.062	0.051	0.031		
D	0.062	0.051	0.031		
H	0.062	0.051	0.031	0.031	0.02

FRAME DESIGNATION	"A" WIDTH	"b" WIDTH	# OF T'S
F	0.061	0.031	12
K	0.051	0.051	12
L	0.062	0.062	12



FRAME DESIGNATION	"A" WIDTH	"b" WIDTH	# OF PADS
G	0.051	0.093	18
J	0.051	0.125	10



*These Frames do not have a dry-film adhesive backing.



Non-ThermoBond Cir-Kits

Description	Part Number
Cir-Kit, Basic Version (A Selection for Mixed Technology Repairs)	6993-0037
Complete Consisting of:	
Track Pad Frame (Selector Type)	1200-0070-P1
Straight Run Frame	1200-0074-P1
Other Accessories:	
Eyelets and Funnelets (qty of 25 each in kits)	1347-0007-P100
	1347-0009-P100
	1347-0010-P100
	1347-0013-P100
	1347-0016-P100
	1347-0051-P100
	1347-0053-P100
Setting Tool Assembly, Upper Setting Tool	6000-0051-P1
Support Tool, Lower Setting Tool	1132-0017-P1
Support Tool Base	1321-0054-P1
Cir-Kit, Advanced Version	6993-0077
Complete Consisting of:	
Cir-Kit Frames	
Track Pad Frame (Selector Type)	1200-0070-P1
Straight Run Frame	1200-0074-P1
Dip Pad Frame	1200-0072-P1
Variety Frame (Angles, T's, Pads)	1200-0073-P1
Other Accessories:	
Eyelets and Funnelets (qty of 25 each in kits)	1347-0013-P100
	1347-0016-P100
	1347-0007-P100
	1347-0009-P100
	1347-0010-P100
	1347-0051-P100
	1347-0053-P100
Abrasive Stick	1129-0014-P10
Setting Tool Assembly, Upper Setting Tool	6000-0051-P1
Setting Tool Guide	6000-0054-P1
Support Tool, Lower Setting Tool	1132-0017-P1
Support Tool Base	1321-0054-P1